



YUKON

LINKS TO LEARNING

JUNE 17-19, 2019 | WHITEHORSE, YUKON



Building Disaster-Resilient Communities in the Face of Climate Change

Leann Hackman-Carty



Overview

- About Disasters
 - Types
 - Challenges
- How your community can Stand APART©
- Resources



About Disasters: TYPES

Natural



Man-made



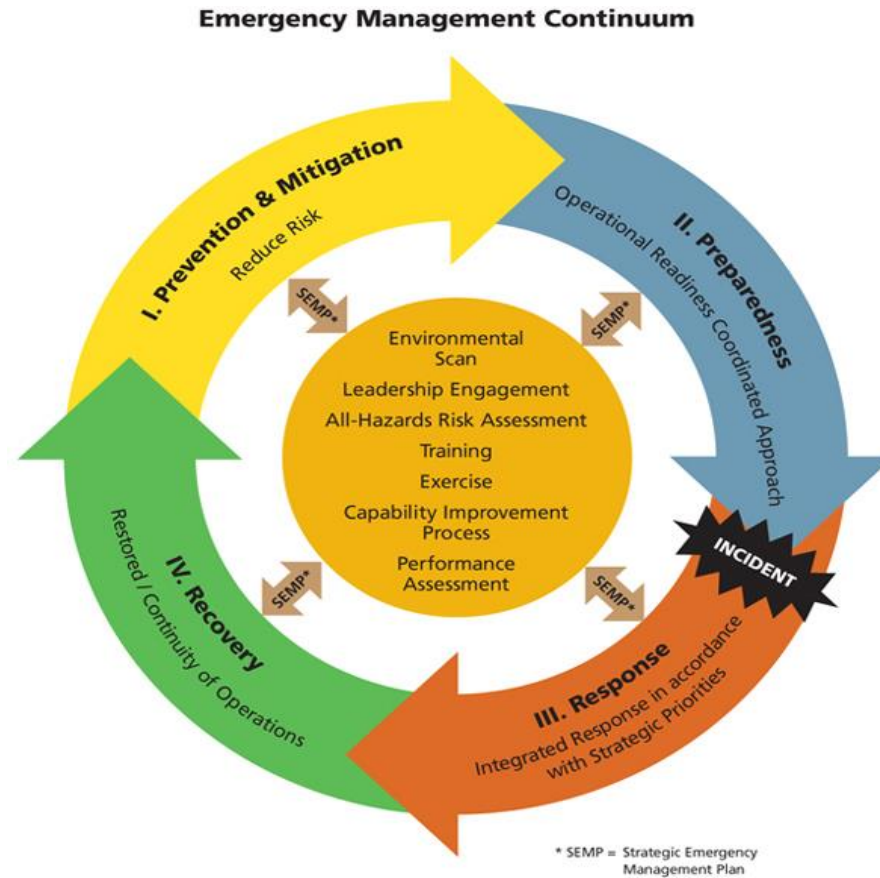
Technological



Crises & disasters damage your economy and scare business away.

It can take YEARS to recover.

About Disasters: PHASES



About Disasters: COST

Location	Type	Date	Insurable Loss
Fort McMurray	Wildfires	May-2016	3,580,000,000
Southern Alberta	Floods	Jun-2013	1,720,000,000
Eastern Canada	Ice Storms	Jan-1998	1,490,000,000
Toronto	Floods	Jul-2013	943,000,000
Slave Lake	Fire	May-2011	700,000,000
Toronto	Flood	Aug-2005	590,000,000
Red Deer/Calgary	Hailstorm	Aug-2014	537,000,000
Calgary Region	Storm	Aug-2012	530,000,000
Calgary	Storm	Jul-2010	500,000,000
Calgary	Hailstorm	Sep-1991	343,000,000

Source: Insurance Bureau of Canada

*reflects insurable loss, not overall cost



Challenges

Who's on first?

Challenges

Vulnerabilities
you didn't
know you had



Challenges

Navigating
government
programs



Challenges

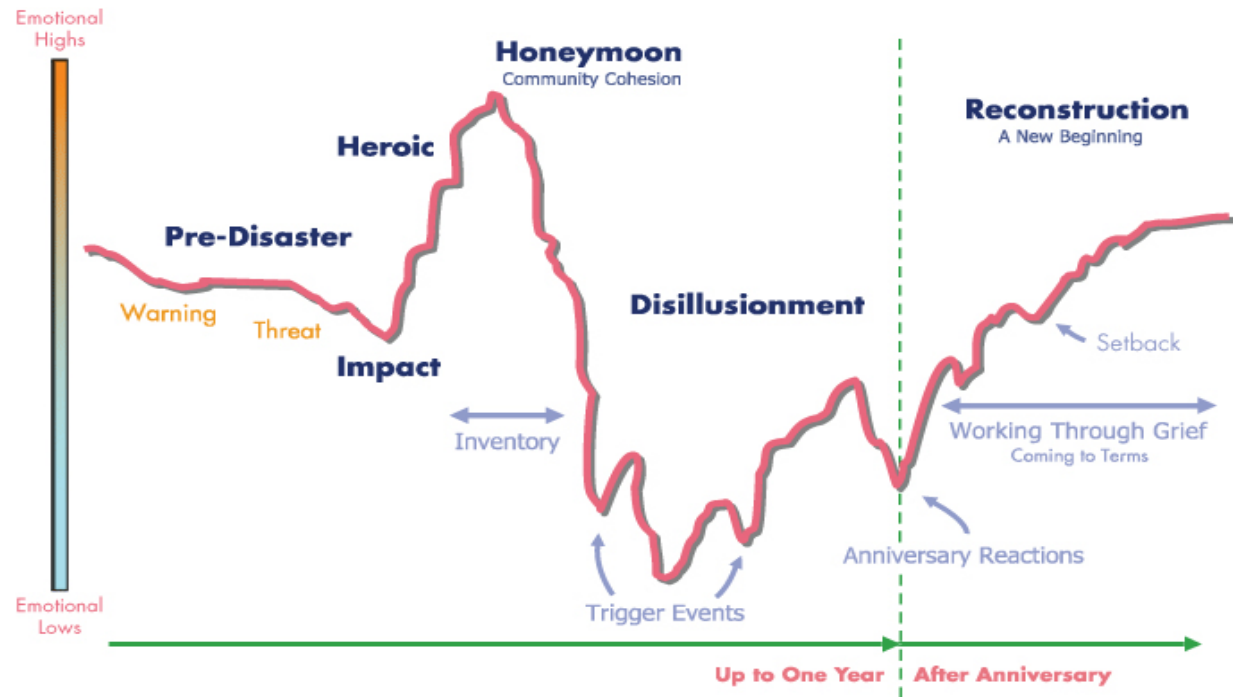
Communication

2019 *This Is What Happens In An Internet Minute*



Challenges

Mental Health



Source: Adapted from *Disaster Mental Health Services: a Primer for Practitioners*

Challenges

Supporting
and retaining
businesses
BEFORE they
fail

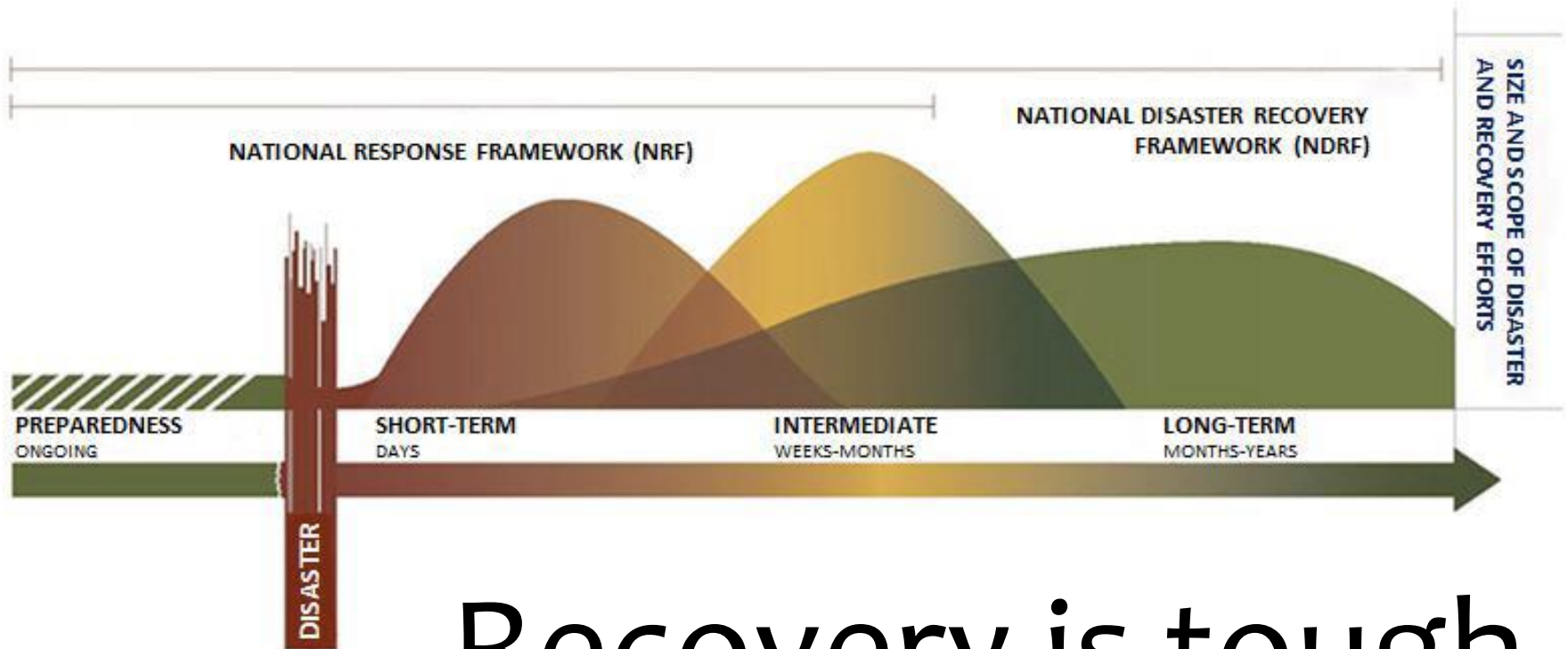


Businesses on Long Beach Island, NY, closed in advance of Hurricane Sandy's arrival. Many businesses that closed due to the storm will be finding their business interruption insurance won't pay them for lost business



Hurricane Sandy left major devastation in her wake this past October. With loss estimates due to damage and business disruption coming in around \$65.6 billion.

Challenges



Recovery is tough



StandAPART

Assess & Mitigate Risk

Identify Risk Type

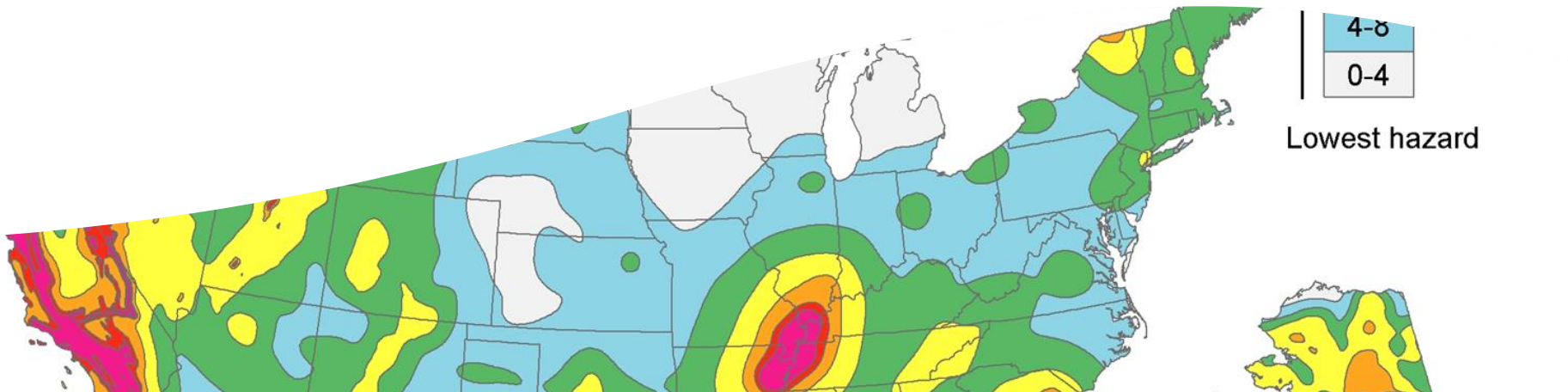
- Natural disasters
- Man-made
- Technological



Assess & Mitigate Risk

Rank Your Risks

- Probability/Likelihood
- Impact/Consequences
- Critical business functions



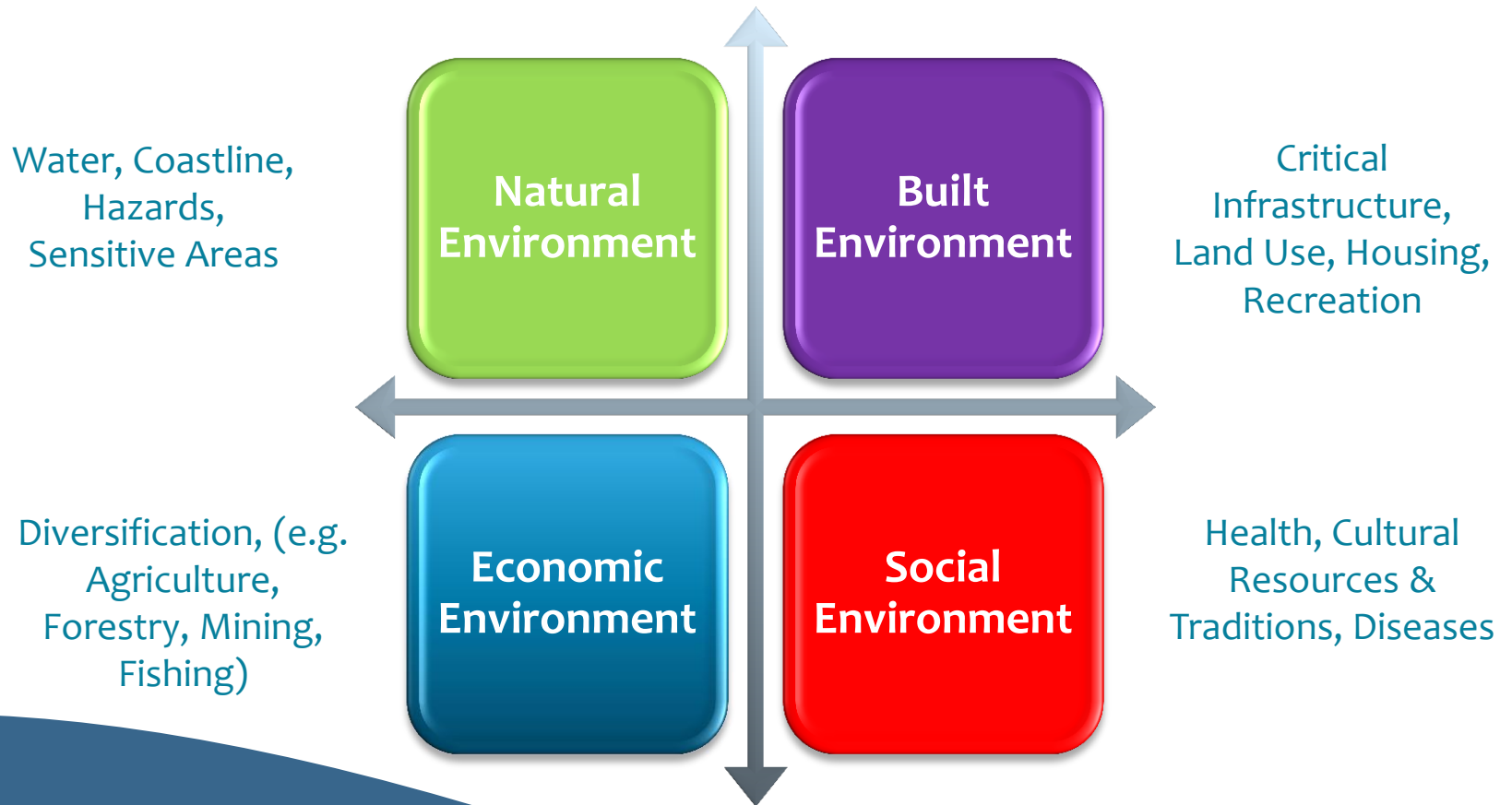
Assess & Mitigate Risk

Mitigate Your Risks

- Develop a Risk Action Plan
 - Natural: fire breaks, earthquake seismic bracing, flood barriers or berms
 - Technological: Cybersecurity
 - Manmade: Economic diversification, critical infrastructure



Plan and Practice Your Response



Source: HackmanCarty & Associates

Activate Your Plan

- Determine when to activate
- Who activates?



Recover Successfully

Six Recovery Support Functions



Template Your Activity

- Key contacts
- Updated procedures/priorities/plan
- Roles/responsibilities
- Practice
- Next update

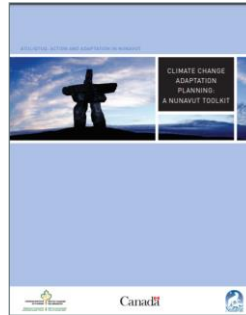
Resources



www.redcross.ca



<https://toolkit.climate.gov>



www.climatechangenunavut.ca



www.crhnet.ca



www.adrp.jibc.ca

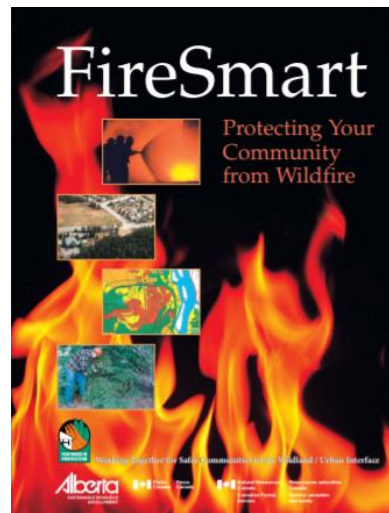
Resources



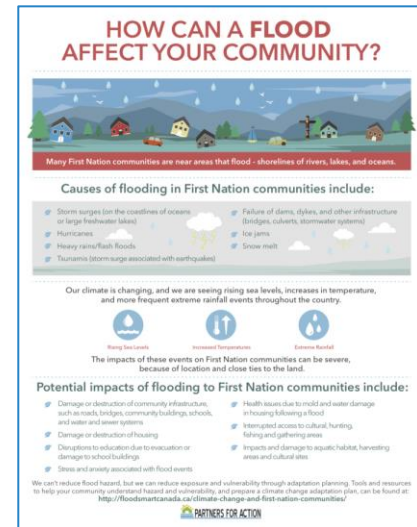
www.ibhs.org



www.fema.gov



www.firesmartcanada.ca

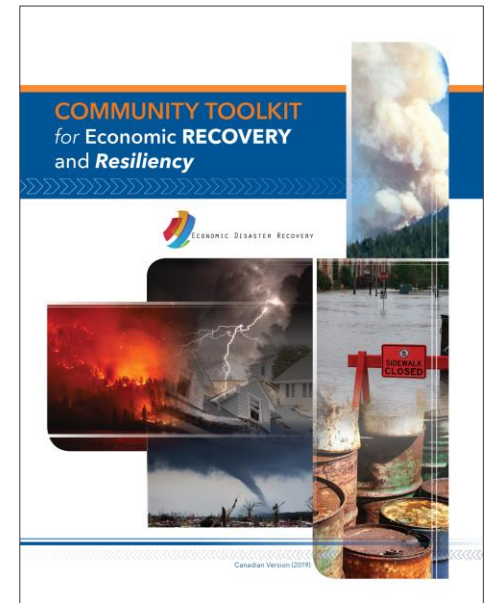
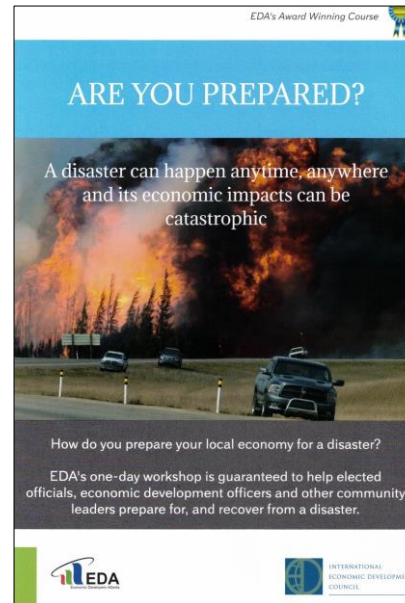


www.floodsmartcanada.ca

Resources



www.restoreyoureconomy.org



www.edaalberta.ca

Resources



RESILIENCE READY
HELPING COMMUNITIES BECOME MORE DISASTER RESILIENT.

www.isdus.org



www.masteryourdisaster.ca



www.jobenomicsblog.com



Final Thoughts



Leann Hackman-Carty
HackmanCarty & Associates



403-214-0224



leann@hackmancarty.com



www.hackmancarty.com



YUKON
LINKS TO LEARNING
JUNE 17-19, 2019 | WHITEHORSE, YUKON

